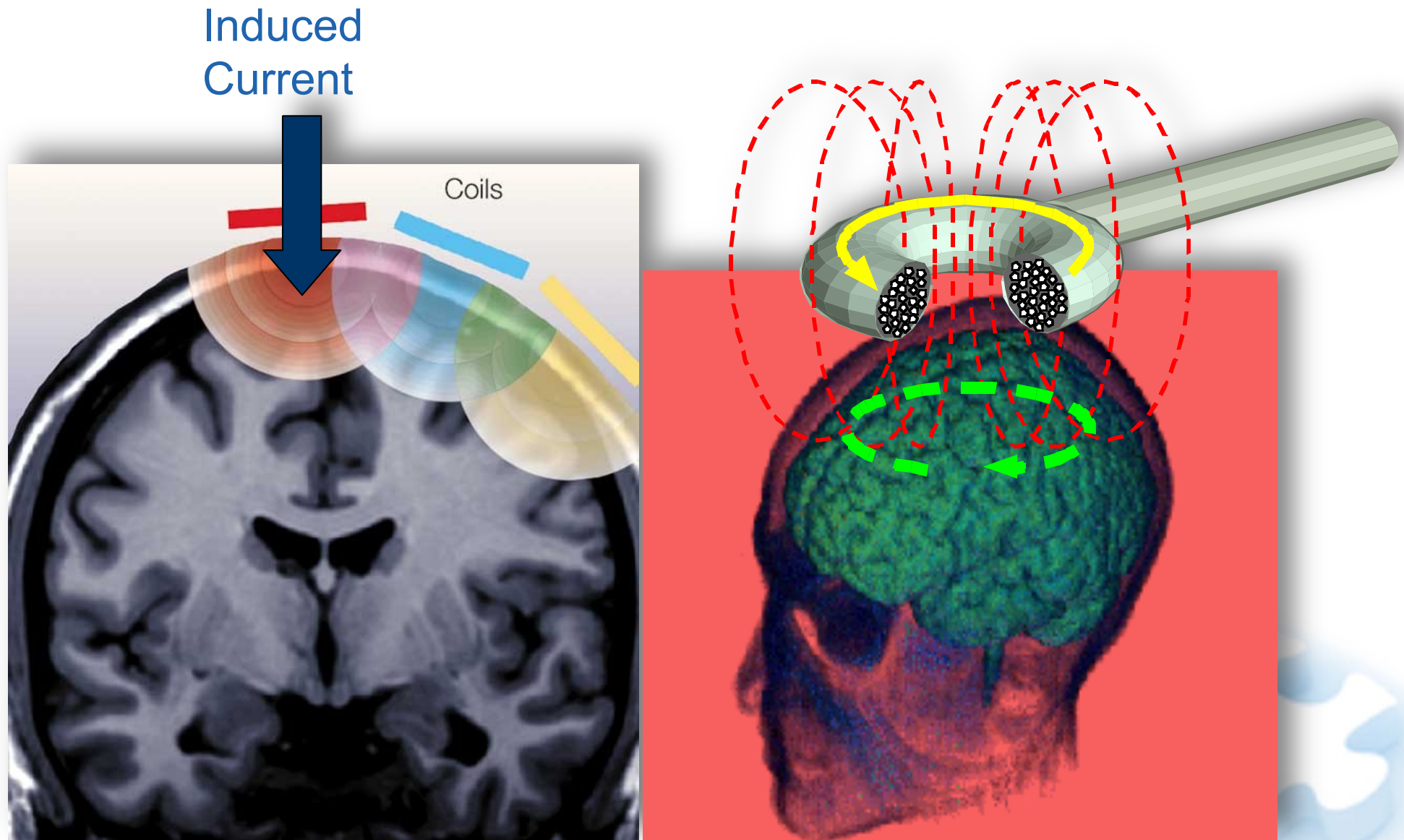


•rTMS, ECT and Magnetic Seizure Therapy

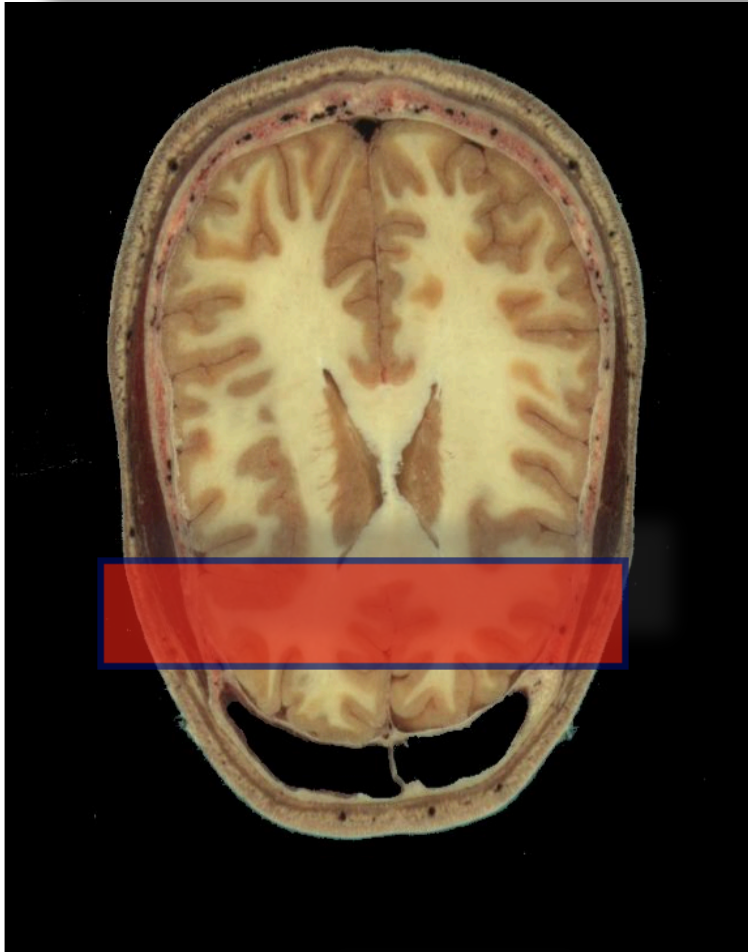
- rTMS can induce seizures at high stimulation energy. Studies have shown inconsistent results
- Electroconvulsive therapy has a high efficiency in treatment-resistant patients with major depression (90% responders 1 month after treatment)
- Theoretical advantages of magnetic seizure induction
 - focal seizure induction from targeted brain region
 - passes through scalp and skull unimpeded
 - may be able to protect specific regions

Transcranial Magnetic Stimulation

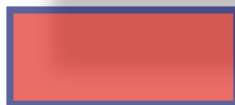
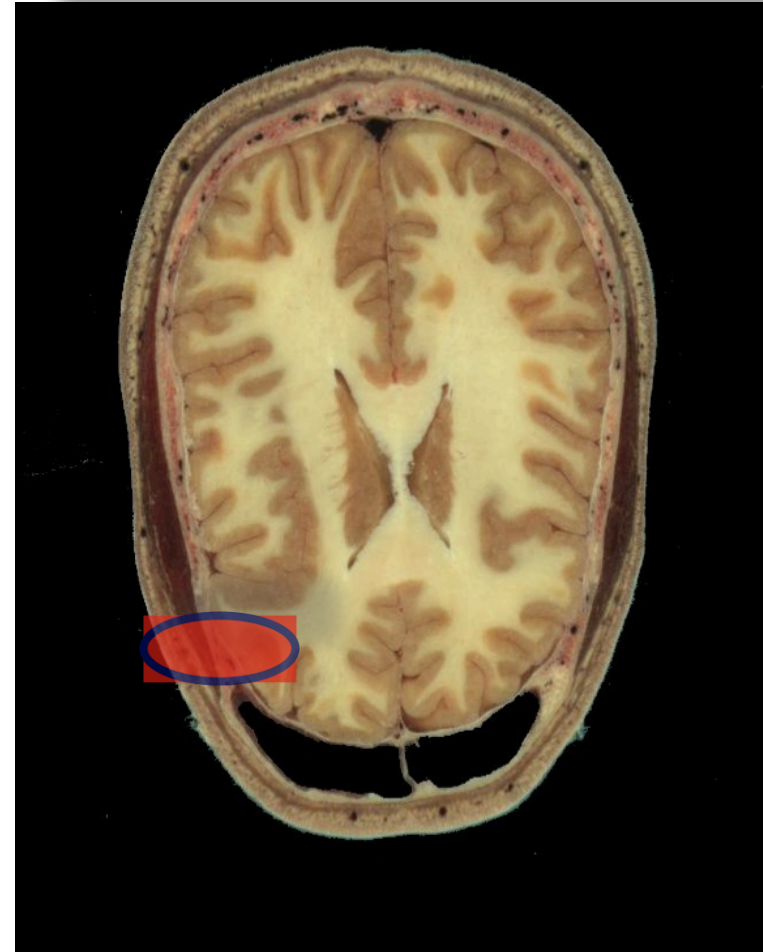


Magnetic Seizure Therapy

Electroconvulsive Therapy



Magnetic Seizure Therapy



Inducing electrical current